



Pukhraj  
**Lifestyle**  
Ultra Modern Premium Apartments



Welcome to Pukhraj Lifestyle

In this multifaceted Apartment we offer you a life of convenience & Luxury at your door step.



## Luxurious LifeStyle Apartments... Infinite Dreams Realized

**Our Vision:** To fill colours in your hopes and give wings to your dreams, We at Pukhraj are Real Estate developers committed to bring an Extra vagant and Luxuriant Lifestyle within Every man's reach. We Encourage you to dream and **DREAM BIG** because we are with you to turn them into reality.

**Our Promise** to you is not a house of mere cement, concrete and bricks But a Home. We aspire to make you housing hopes & aspirations come stay with us your stay will be forever. Pukhraj Lifestyle is Located in the prosperous and Elite Northen Part of Kota City on the Main Station Road.





We believe that a home is an environment that contribute to the growth, success and happiness of the entire family  
Pukhraj Lifestyle is a concept that give you the best value for your hard earn money.



Enter the world you never knew existed







- Structure : Earth quake resistance RCC composite structure with Brick Masonry Cement plastering and Putty finish
- Flooring : Vitrified Tiles/ Marbles  
Wooden Flooring in one Bed Room  
Ceramic Tiles in Wash Rooms and Balcony/ Terrace  
Cement Pavers in Drive Way and Porch
- Doors : Designer Door with Wooden Frame
- Windows : Wooden/ Aluminum and UPVC frames
- Kitchen : Indigenous Semi Modular Kitchen  
Granite Counter, Stainless Steel Sink  
Ceramic wall Cladding above Kitchen counter  
Provision for Exhaust Fan & Geyser, Hot and Cold Mixture
- Washroom : Glass Panel in Master Washroom  
Designer Ceramic Tiles upto Door Height.  
Premium Brand CP Fittings with O/H Shower
- Paint : Plastic Emulsion for all Internal Walls  
Water Proof Cement Paint for External Walls
- Electrical : Modular Switches  
Segregated power and Lighting Circuits  
Concealed conduits with Fire Retardant Copper Wires  
AC Provision in All Bed rooms and Drawing room.  
TV Points in all Bed rooms & Living room  
Telephone points in Bed rooms, Living room
- Security : The Entire Campus will be Secured with Hi-Tech Security Systems along with Round the Clock Security at Entrance Gate  
Centralised EPABX Facility at Security Desk  
Entire Campus will be Surrounded by 6 Ft. High Walls

# Towards creating a masterpiece.

## Towards creating a masterpiece...

All the element get together to create a perfect ambience and a lifestyle that evokes richness & an understated elegance. The team of architects have followed the below maintained design philosophy to conceive **Pukharj Lifestyle**. Also these are their suggestions to create the 'magic' at dream home!



### Parking Area

Well Designed Parking area on Silt Floor Connected to High Speed Lift Area for your convience. Dedicated covered/ Open parking space for all flat owner with a seperate visitors parking.



### Children room

Bedroom decor of teens and kids becomes a major means of self-expression for kids. It's a stage when toys are still important, whereas hobbies, collections, electronic equipments, music and clothes are much more so, their rooms should be kept with minimal furniture and let the colours wallpapers, rugs, carpets add colour and life to us.



### Kitchen

Functionality, intelligent utility/ store space with ideal lighting & ventilation having great looks are what makes a modern kitchen truly enviable.



### Bathroom

Bathrooms can be made more functional by defining wet & dry areas. Wet & dry areas can be differentiated by using glass curtains, shower cubical, shower curtains, etc. Beautiful accessories can play its role in matching your bathroom look fresh & neat.



### Drawing Room

A Drawing room reflects that aesthetic & cultural styles of the occupants. Various elements such as furniture, light, curtains, colour, artifacts of your choice collaborate together to give a desired look ranging from modernistic to ethnic & traditional.



### Accessories & Light

Accessories emphasize the impact. One can use typical vases, mirrors, scented candles of carious shapes, etc. Green plants and flowers can add a lot of impact of the setting and gives a beautiful look to each area.



### Bed Room

Bedrooms reflects your personal identity, taste & style. They can be made more interesting by using different tapestry, lights, personal photographs, fresh flowers, etc. providing the soft care of comfort.



### Security System

A Hi-Tech Professionals 24 x 7 security system having all the modern equipments like CCTV, EPABX for your family security at entrance gate and all flats will be connected through EPBX for better communication security system.



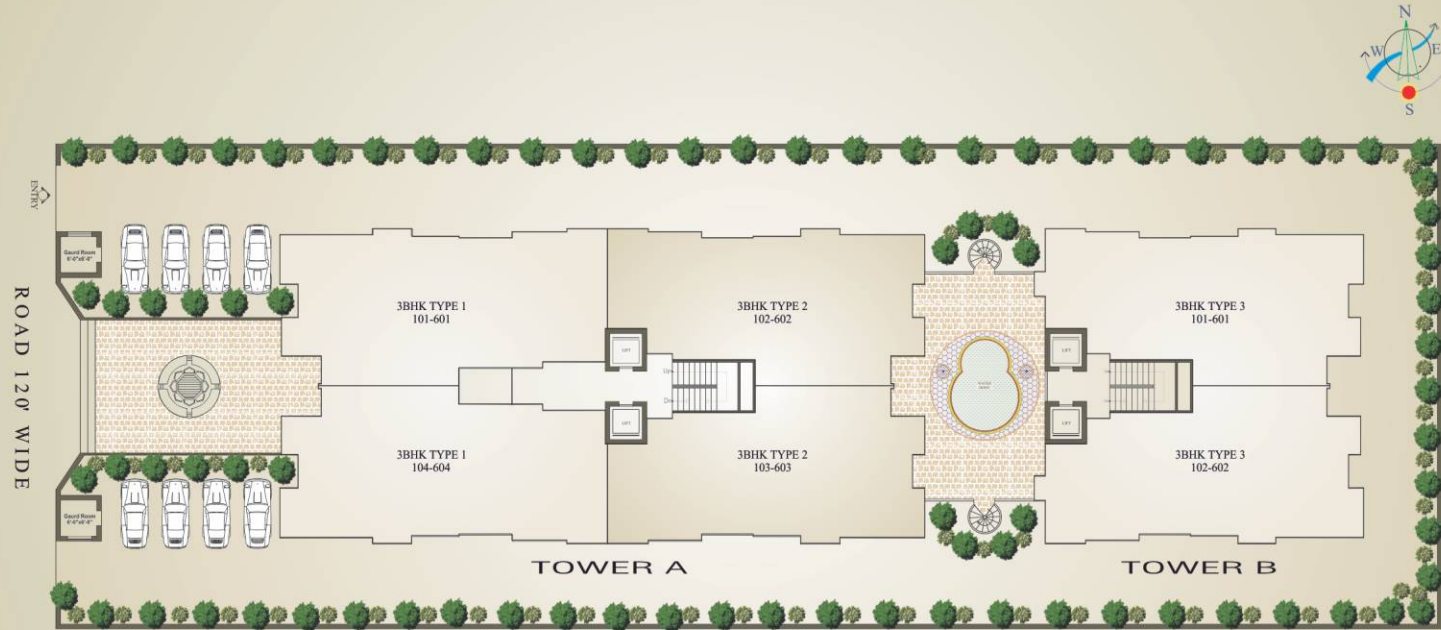
### Dining Room

Centralized located dining having outside view, also benefits the kitchen functional and utility area to give a great family togetherness and happiness.

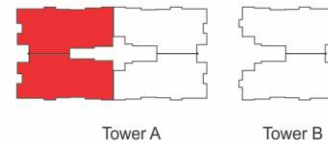
**The smart and intelligent use of these elements can be seen in all of the spaces designed by us redefining a house into a Home to live...**



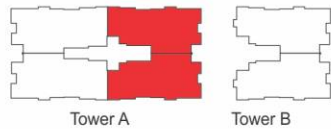
Master Layout PLAN



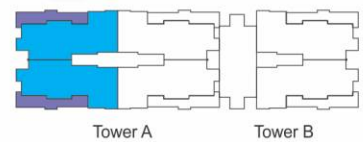
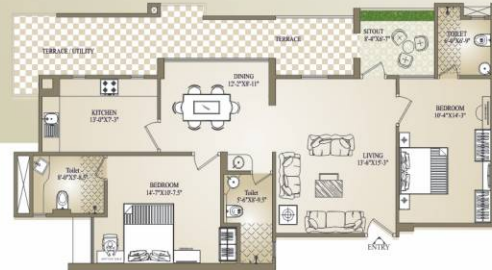
3BHK  
1722.86 SQFT.



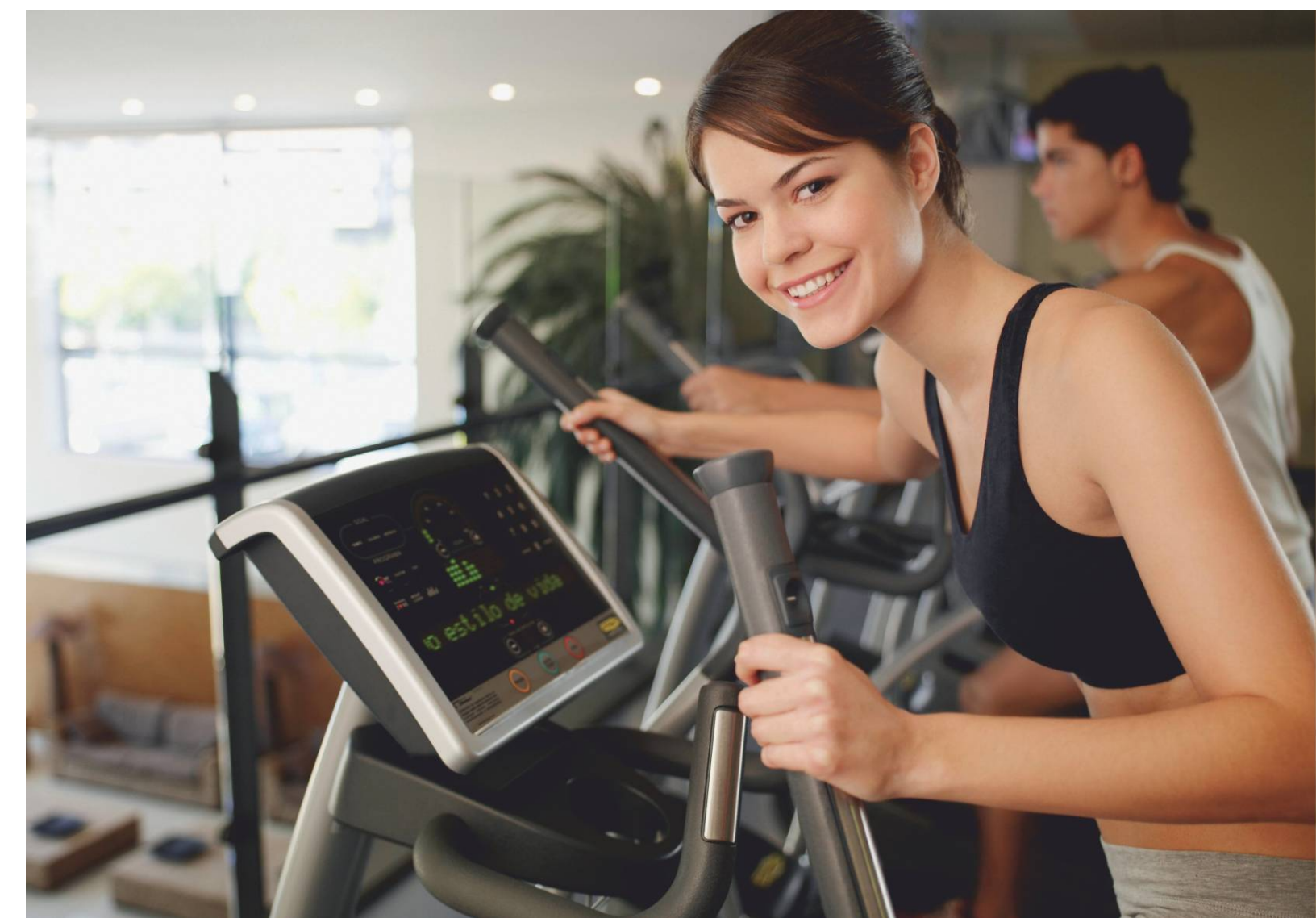
3BHK  
1611.11 Sq.Ft.\*



2BHK  
1378.89 Sq.Ft.







## Happiness... No Boundaries at all



- Gymnasium
- Splash Pool
- Lounge for carom, chess, card and table tennis
- Two dedicated furnished guest room for additional facilities
- A multi functional community Hall for family functions and ceremony
- 100% power backup for common areas and elevators
- All flats are corner flats for proper ventilation and sunlight all around
- Free intercom facilities for better communication
- Spacious balcony for relaxation
- Uninterrupted water supply with overhead and under ground water storage tank
- Rain water harvesting system
- Both towers having high speed lifts(4) for convenience







**Pukhraj Lifestyle**  
Ultra Modern Premium Apartments

**Pukhraj Lifestyle**  
Ultra Modern Premium Apartments



What do you and your Family look for in a Home

Pukhraj Lifestyle is prominently located in the heart of Kota City and it's blend of modern architecture with a touch of reality. These 2-3 bedroom apartments bring to you all the comfort, class & unmatched lifestyle for you & your family.

Own a home that is inspired by luxury designed for your comfort & enhances your prestige. Be a part of Pukhraj Lifestyle, The status symbol of Kota and live the lifestyle you always wanted.



**Builders and Developers :-**



**Pukhraj homes Pvt. Ltd**  
( A Unit of Pukhraj group )  
Station Road, Kota Junction  
Email :- [pukhrajhomes@gmail.com](mailto:pukhrajhomes@gmail.com)  
0744-2440277, 9829039655, 9352600549



**Principle Architects**  
**PLINTH Stone**  
Hydrabad

**Structure Consultants :**  
**PTDC, Jaipur**